



MONTHLY MEMBERSHIP PROGRESS REPORT

District 9 NW

Results as of: 5/31/2017

GMT: Judy Hankom

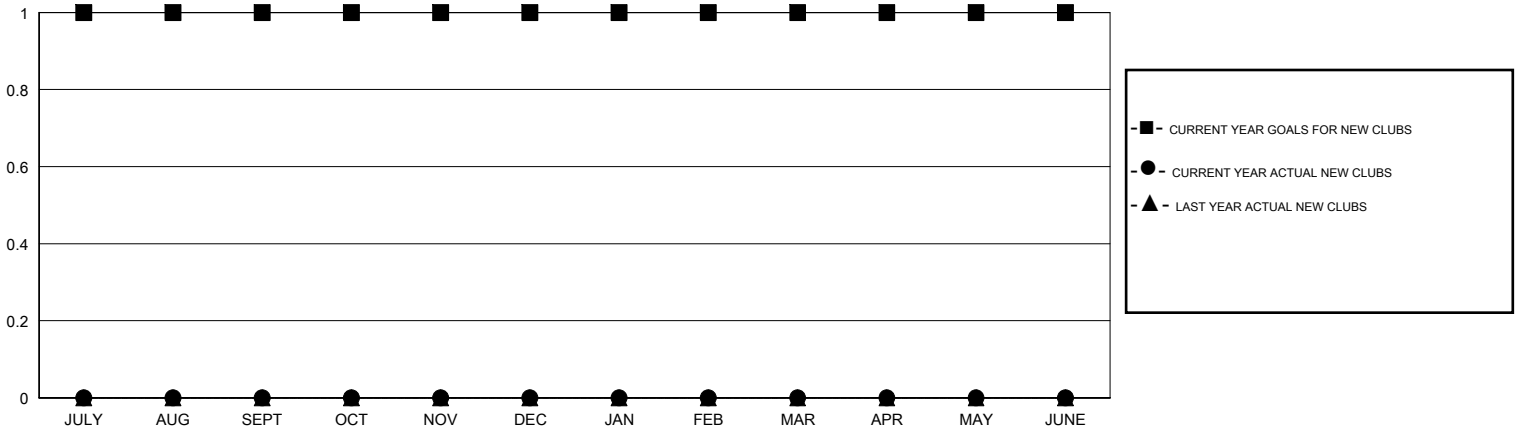
LOCATION IOWA

GMT CA

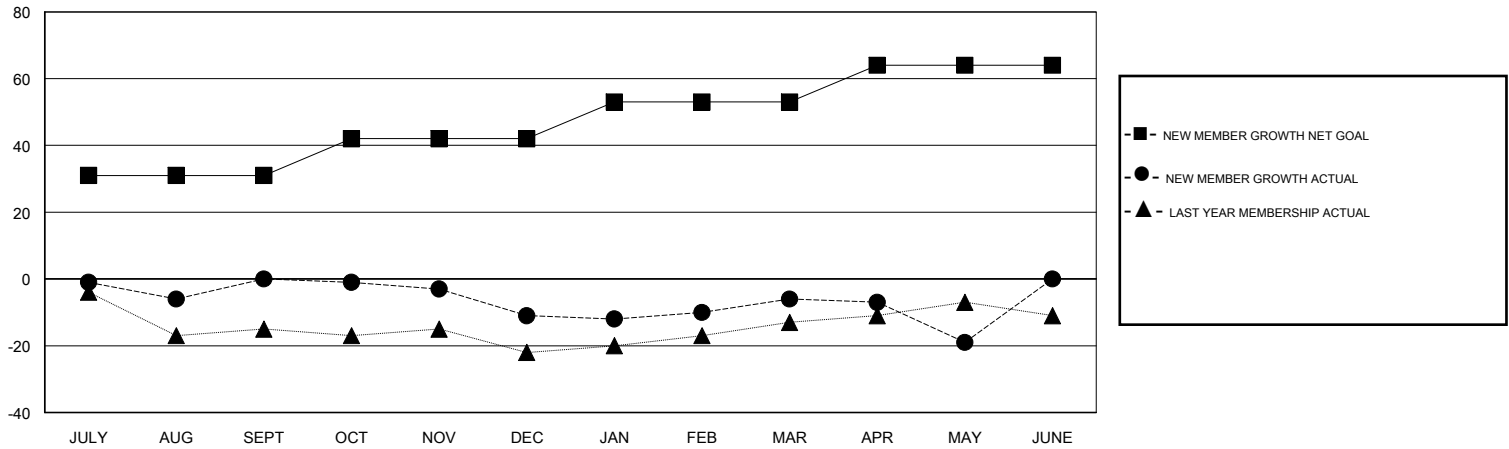
| Clubs | | | |
|-----------------------|---------------|-----------|---------------|
| RESULTS FOR 2016-2017 | | | |
| QUARTER | NEW CLUB GOAL | NEW CLUBS | DROPPED CLUBS |
| JULY/AUG/SEPT | 1 | 0 | 0 |
| OCT/NOV/DEC | 0 | 0 | 1 |
| JAN/FEB/MAR | 0 | 0 | 0 |
| APR/MAY/JUNE | 0 | 0 | 0 |

| Members | | | |
|-----------------------|--|--|--|
| RESULTS FOR 2016-2017 | | | |
| QUARTER | NEW MEMBER GROWTH NET GOAL (not reinstated or transfers) | NEW MEMBER GROWTH ACTUAL (not reinstated or transfers) | DROPPED MEMBERS ACTUAL (including transfers) |
| JULY/AUG/SEPT | 31 | 20 | 20 |
| OCT/NOV/DEC | 11 | 12 | 23 |
| JAN/FEB/MAR | 11 | 26 | 21 |
| APR/MAY/JUNE | 11 | 6 | 19 |

GOALS AND ACTUAL NEW CLUBS CUMULATIVE



GOALS AND ACTUAL MEMBERS CUMULATIVE



| | |
|------------------|-----------|
| DROPPED CLUBS: 1 | |
| DROPPED MEMBERS | |
| DECEASED | 12 |
| CLUB CANCELLED | 2 |
| OTHER | 69 |
| TOTAL | 83 |

24 CLUBS OF 44 ADDED 1 OR MORE NEW MEMBERS

[CLICK HERE FOR CUMULATIVE MEMBERSHIP DATA](#)

| | |
|---------------------------------|--------------|
| <u>GENDER DISTRIBUTION</u> | |
| MALE | 765 (80.36%) |
| FEMALE | 187 (19.64%) |
| TOTAL FAMILY UNIT MEMBERS | 120 |
| FAMILY MEMBERS PAYING HALF DUES | 60 |